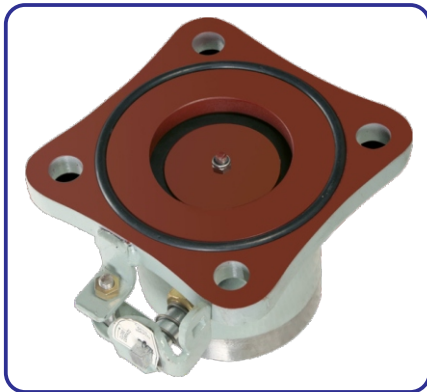
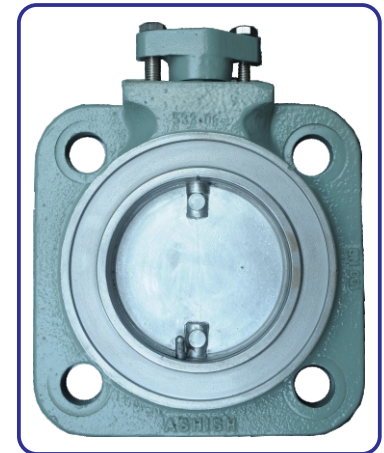




We are instrumental in manufacturing and supplying a wide range of Radiator Valves .These Radiator Valves are made of quality assured gun metal, which is sourced from reliable vendors. Clients can avail these products from us at industry leading prices.



WELD TYPE VALVE



Specification : Cast Iron & Gun Metal Body, Square shape 80 and 100 NB, Round shape 50-100, 150 and 200 NB.

Leak Test : Leakage Through Valve Body Nil, Leakage Around Diaphragm Max.6Drops/Min. Leakage Around Top Spindle Nil with or without Cap.

Porosity Test : With Air Pressure of Kg/sq.cm: No leakage or sweating through the body or spindle assembly.

Backed by rich industry experience, we are able to design & fabricate C. I. Radiator Valves. These valves are extensively used as shut off valves for detachable radiators of oil cooled transformers. Our C. I. & Gun Metal Radiator Valves are available in different designs and specifications as required by the clients.

Technical Details :

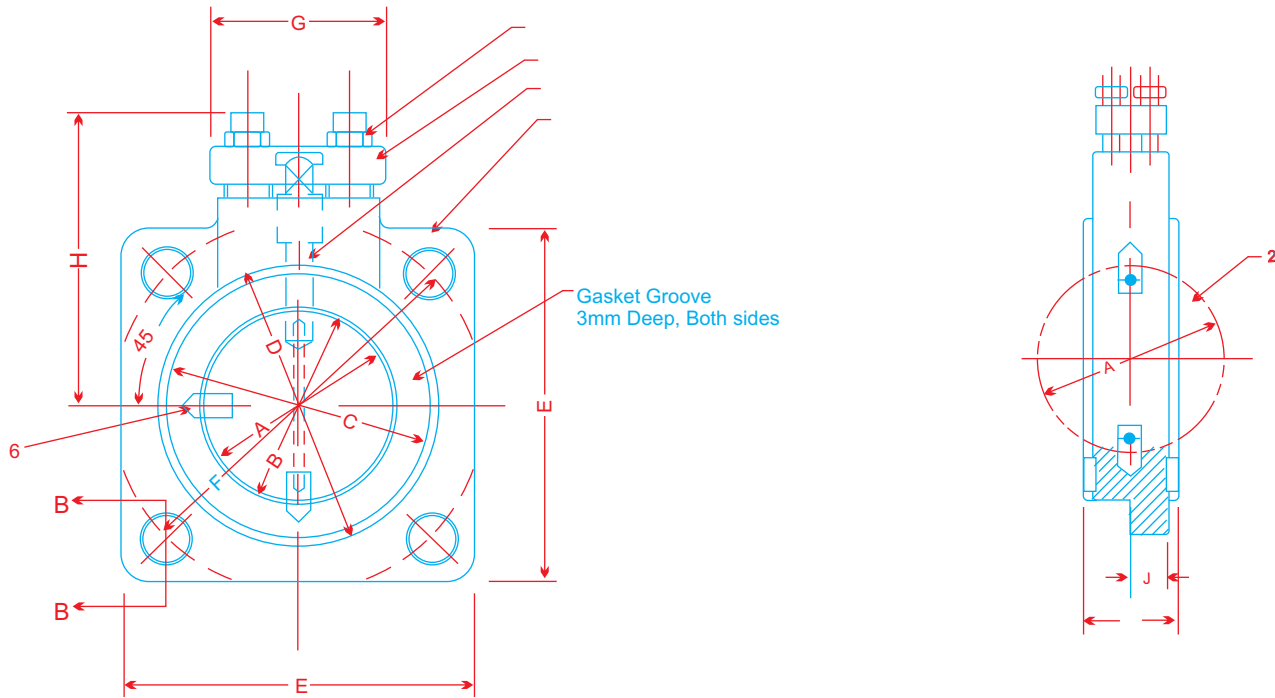
- The valve is equipped with a butterfly flap that can be turned to open and close the valve
- The valve remains in open position when the transformer is in "on-load" condition
- For inspection and repair of radiator, the butterfly flap is closed and the radiator is detached from the transformer
- Manufactured in a variety of diameter from 50 mm to 200 mm

Key Benefits :

- Shell moulded, shot blasted and fettled CI casting for zero body leakage and better finish
- Streamlined flap design minimizes frictional resistance to fluid flow
- No rubber lining yet leak proof
- Valve is able to look in "open" and "shut" position by cap.



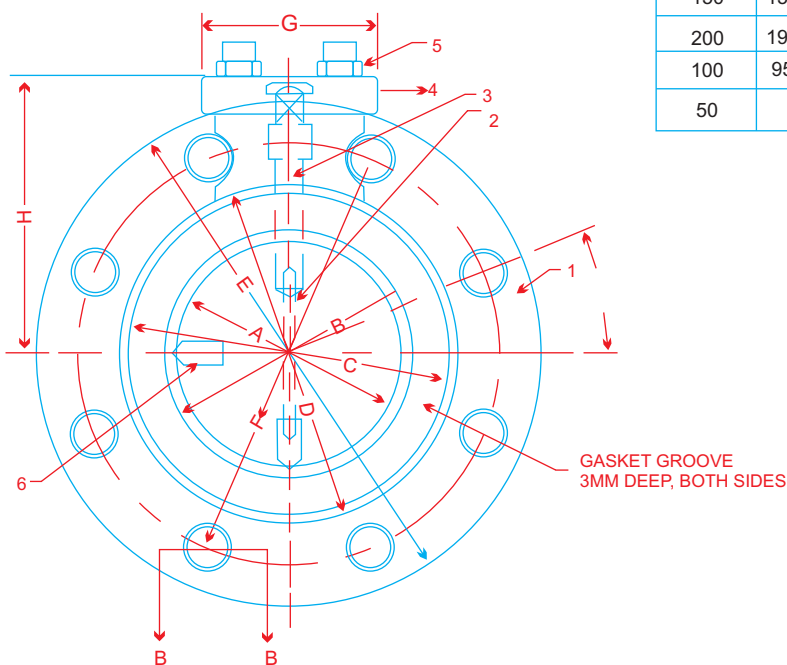
Radiator Valve



N. Bore	All Dimensions are in MM										Hole		Weight kg.
	A	B	C	D	E	F	G	H	J	T	DIA.	Nos.	
80	77	86	113	120	150	160	75	125	16	40	18	4	3.4
100	95	105	136	145	180	180	75	145	16	40	22	4	5.5

FIGURE-2 : CIRCULAR TYPE

N. Bore	All Dimensions are in MM										Hole		Weight kg.
	A	B	C	D	E	F	G	H	J	T	DIA.	Nos.	
150	150	160	190	198	285	240	75	204	16	40	22	8	8.6
200	192	202	242	250	340	295	75	225	16	40	22	8	11.4
100	95	105	136	145	215	180	75	145	16	40	22	4	5.3
50									16	40	18	4	3.1



Description Material		
SL.No.	Description	Material List
1	Valve Body	Cast Iron
2	Gate (Diaphragm)	Mild Steel
3	Spindle	Mild Steel
4	Cap	Alluminum
5	Cap Bolts	Mild Steel
6	Stop Pins	Mild Steel

All Dimensions are in MM Unless Stal